



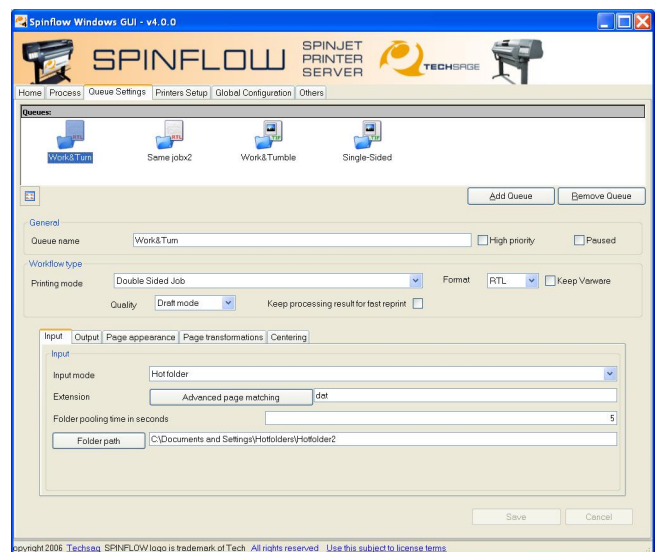
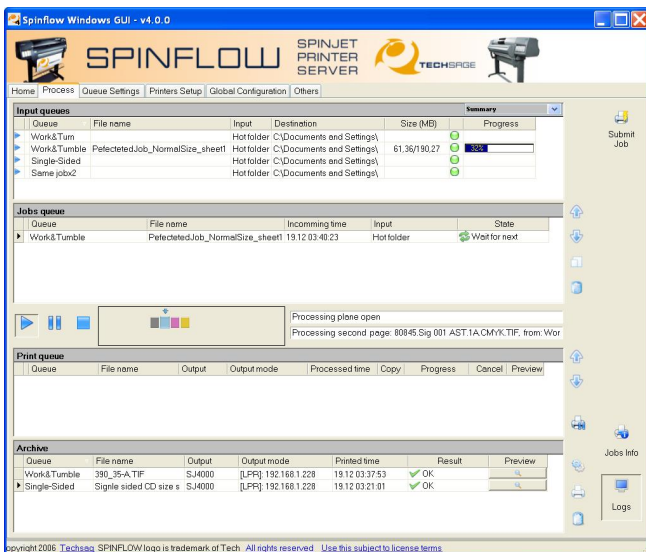
**Jumped without a Parachute?**

**CTP without SPINJET!**

## 1. SPINFLOW v2.X to v4.1.X UPGRADE:

### **OPTIMIZE YOUR SPINJET INSTALLATION!**

If you have SpinFlow version 2.5 or earlier you can achieve great optimization of your SpinJet workflow and get the improved User Interface by upgrading to the latest **SpinFlow version 4.1.X**:



### IMPROVEMENTS INCLUDE:

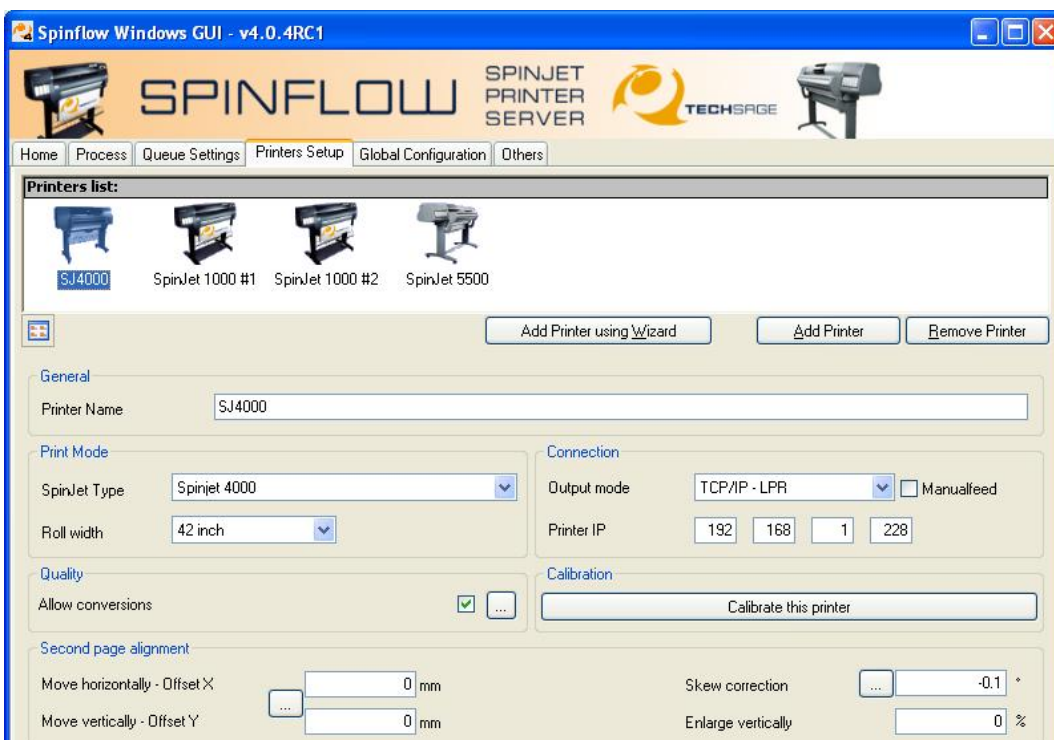
- Built-in wizards and tutorials.
- Persistent queues states.
- Queue receiving status led indicators.
- Detailed job information window.
- Skew measurement calculator tool.
- More conversions options.
- Reversed auto-fit-best-fit.
- Context menus in processing window.
- Wildcards page matching.
- Onscreen thumbnail views for fast and accurate job recognition.
- Transparent scalable preview for double-sided adjustment measurement, view and correction.
- Load balancing feature (must be purchased separately!). Detects and balance printers workload. Ensures efficient utilization of available printer capacity and optimal throughput for multiple SpinJet installations.
- 'n' print copies and Fast reprint possibilities.

## **2. LOAD BALANCING Extension for SPINFLOW v4.1.X:**

### ***OPTIMIZE YOUR SPINJET INSTALLATION!***

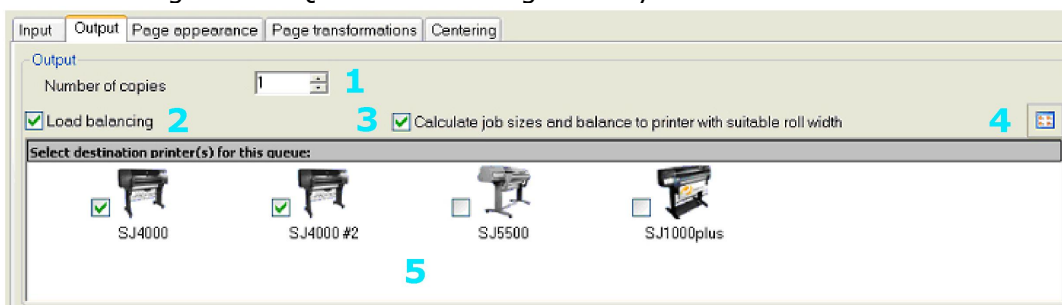
- You already have 2 or more SpinJets?
- Or, you have 1 SpinJet and you're contemplating the purchase of an additional SpinJet?

Then the LOAD BALANCING Extension for SPINFLOW v4.1.X is the thing for you!



- The SpinJet/Printers are shown visually.
- Test and set-up calibrations are done for each SpinJet/Printer individually.

Define settings of the Queue concerning the way it sends the data.



1. Number of copies. If you want more than one copy printed of the jobs sent to this queue, you enter the desired number here.
2. If you have a License for Load Balancing, you can activate or deactivate it for each queue individually, as well as selecting the printers for which Load Balancing should be used.

# SPINJET - UPGRADE PATHS



- If you check this box, Load Balancing will include auto rotation in the evaluation of which printers are suitable for the output of the jobs sent to this queue. E.g. if you have both a SpinJet 1000 (36") and a SpinJet 5500/42" and your job is 40"x32", and the SpinJet 1000 has the best capacity available, Load Balancing will output the job on the SpinJet 1000 turned 90 degrees (Landscape).
- Switch between Printers viewed as Icons or Lists.

Select destination printer(s) for this queue:				
Name	Spinjet Type	Roll width	Output mode	Printer destination
<input checked="" type="checkbox"/> SJ4000	Spinjet 4000	42 inch	TCP/IP - LPR	192.168.1.228
<input checked="" type="checkbox"/> SJ4000 #2	Spinjet 4000	42 inch	TCP/IP - LPR	192.168.1.228
<input type="checkbox"/> SJ5500	Spinjet 5000/5...	42 inch	TCP/IP - LPR	1.1.1.1
<input type="checkbox"/> SJ1000plus	Spinjet 1000	36 inch	TCP/IP - LPR	1.1.1.1

- Select destination printers for this queue. If you have more than one SpinJet, you can define which of these should be possible output destinations for this queue.

## Upgrade paths:

Existing equipment	New Purchase
You already have 2 SpinJets - both with SpinFlow v2.X	<ul style="list-style-type: none"> <li>• <b>SpinFlow v2.X to v4.1.X Upgrade</b></li> <li>• <b>SpinFlow v2.X to v4.1.X Upgrade</b></li> <li>• <b>Load Balancing Extension</b></li> </ul>
You have 2 SpinJets - 1 with SpinFlow v2.X - 1 with SpinFlow v4.1.X	<ul style="list-style-type: none"> <li>• <b>SpinFlow v2.X to v4.1.X Upgrade</b></li> <li>• <b>Load Balancing Extension</b></li> </ul>
You have 1 SpinJet with SpinFlow v2.X	<ul style="list-style-type: none"> <li>• <b>SpinJet 6200</b> (SpinFlow v4.1.X is included in the purchase of the new SpinJet)</li> <li>• <b>SpinFlow v2.X to v4.1.X Upgrade</b> (for the existing unit)</li> <li>• <b>Load Balancing Extension</b></li> </ul>
You have 1 SpinJet with SpinFlow v4.1.X	<ul style="list-style-type: none"> <li>• <b>SpinJet 6200</b> (SpinFlow v4.1.X is included in the purchase of the new SpinJet)</li> <li>• <b>Load Balancing Extension</b></li> </ul>

For pricing and availability, please contact TechSage or your local SPINJET dealer.