

Product Specifications

- The SPINJET 4000 is a unique system for Double-Sided Imposition Proofing, as well as other Double-Sided Productions such as Signage and Banners.
- The SPINJET 4000 is designed to be an attachment to the Hewlett-Packard (HP) Designjet 4000 and Designjet 4020 large format inkjet printers (PS or non-PS models).
- The SPINJET is a fully automatic solution. During operation, the first side is printed from the roll and cut automatically by the printer. The SPINJET unit then reloads the printed cut sheet into the Designjet, which prints the reverse side and delivers the completed double-sided print.

Features includes:

- High speed, accurate and high quality in one operation
- High color accuracy
- Early error detection and minimization of error cost
- A variety of media types supported
- Switch freely between Single- and Double-Sided production
- Printer non-impact solution: The SPINJET 4000 accessory does not affect the Designjet 4000/4020's original printer functionality and full HP warranties are maintained.

SPINJET 4000



Accuracy

The SPINJET 4000 will not exceed the following maximum variance for front to back registration:

- In the center: Front-to-back deviation in any direction less than +/- 0.5 mm.
- In the corners: Front-to-back deviation in any direction less than +/- 1.0 mm.

This is tested and measured by printing a “donut” with the above given figures as inner circumferences of the donut on the front page, and a crosshair on the back page. The crosshair must be within the inner circumference of the “donut”, when looking through the print.



The accuracy can deviate from the above depending on a range of factors:

- **Environment:** Maximum variance of the front to back registration is reliant upon the environmental conditions (70% Fahrenheit +/- 8, 55% relative humidity +/- 10, with change no greater than 2% per hour).
- **Media:** The weight and grade of the media in use.
- **Ink:** The amount of ink use in the print job. The more ink – the higher deviation.
- **Length:** The longer the print the larger the risk of deviation.

With the SPINJET 4000 TechSage has emphasized on the stability and repeatability of the print, giving SPINJET 4000 System users the possibility of producing consistent high-quality double-sided prints.

SPINJET 4000



Above specifications are valid only when using TechSage recommended media:
See www.spinjet.com for approved media

Media

Applicable Media and print sizes:

In double-sided mode: Roll widths of 24"/61cm, 36"/91,4cm, 42"/107cm.

Acceptable print length:

For imposition proofing: 600 mm – 2500 mm.

For poster and banner production: 600 mm – 4000 mm.

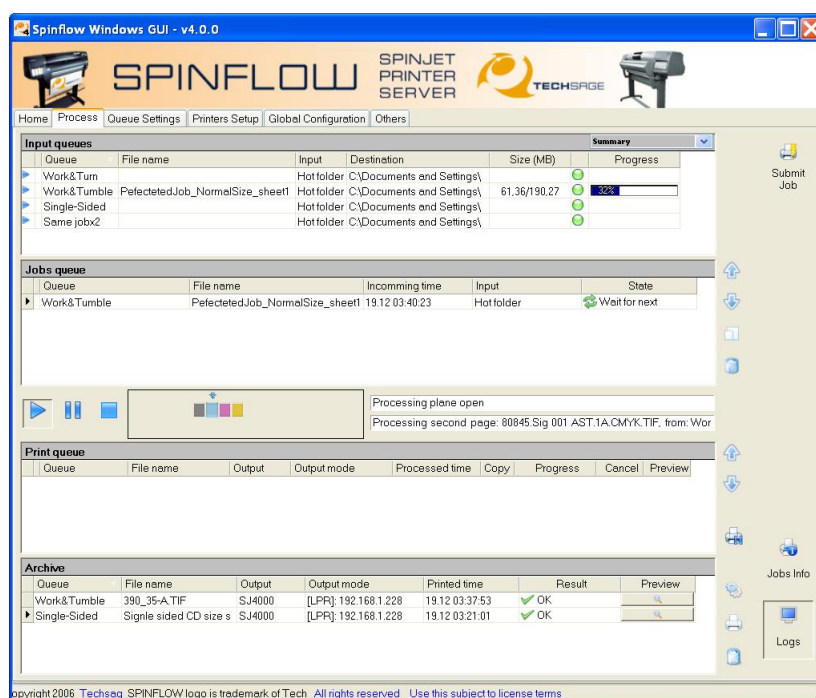
Margins: Top/bottom margin 25 mm minimum.

In single sided mode: Please refer to HP Designjet 4000 product specifications

Interface

SPINFLOW Version 4.1.0 or later is the SpinJet Printer Server for the SPINJET 4000 system. SPINFLOW is a Windows based application.

SpinFlow enables double-sided output from a wide range of Prepress RIPs (Imposition Proofing) and Production Print Servers (e.g. for Signage and Banners).



Features includes:

- Multiple set-ups and queues
- Set-ups for different job types: Work & Turn, Work & Tumble, Single Sided, Sheet Work
- Sequential printing (ensuring correct print order)
- Auto front to back centering
- Ink reduction
- Fast reprint

- Auto rotation of jobs to save media (autofit/best fit option)
- Scalable previews of jobs
- Windows and Web browser User interface

File formats supported:

- **RTL:**
 - 4 color CMYK 32 bit
 - 3 color CMY 24 bit
 - 3 color RGB 24 bit
 - 6 color CMYKLcLm 48 bit
 - Files with Index color (in all of the above formats) and own palette, max 8 bit per index
- **TIFF Contone:**
 - CMYK 32 bit
 - RGB 24 bit
 - Greyscale 8 bit
 - TIFF with User Palette

Some RIP and Print Server vendors have chosen to serve their customers by providing them with the ability to proof directly to the SPINJET 5X00 from their system. Please ask your vendor if the SPINJET 4000 is supported.

Please refer to the SPINFLOW specifications for further details.

Physical Data

Height x depth x length / weight:
650 x 350 x 1300 mm / 30 kg

Network

See www.hp.com/designjet

Operating environment

Power requirements: 100-240V±10%, 50-60Hz single version

Power consumption: 50 watts max. when operating
10 watts max. in standby mode

Temperature range: Operating 15 – 35°C /
Storage -40 – 70°C.

Relative humidity: Operating 40% - 80%.

Productivity

The SPINJET 4000 system has 3 levels of productivity based on the choice on the printer:

- Fast
- Normal
- Best

When working with the Designjet 4000/4020, a range of settings regarding resolution are available.

Below you have an overview of the various possibilities.

These have consequences for the print quality and print speeds, so choosing the correct settings on the printer and in SpinFlow are important to the performance you will achieve.

DJ4000 is using closed loop calibration.

Application (document) resolution:			
Quality	Optimized	Max Detail	Resolution
Best	Lines	on	1200
	Images	on	600
	Lines	off	600
	Images	off	600
Normal	Lines	on	600
	Images	on	600
	Lines	off	600
	Images	off	300
Fast	Lines	on	300
	Images	on	600
	Lines	off	300
	Images	off	300
Rendering resolution:			
Quality	Optimized	Max Detail	Resolution
Best	Lines	on	1200
	Images	on	1200
	Lines	off	600
	Images	off	600
Normal	Lines	on	600
	Images	on	600
	Lines	off	600
	Images	off	300
Fast	Lines	on	600
	Images	on	600
	Lines	off	300
	Images	off	300
When is object banding used:			
Rendering resolution		Object banding treshold	
300		10 m	
600		5 m	
1200		2,5 m	

Please refer to HP Designjet specifications of printer speeds for details.

Note: This specification is subject to change without notice.

SPINJET 4000



The SPINJET system is produced by:

TECHSAGE

Rudevej 53, Saksild

8300 Odder

Denmark

WWW: spinjet.com

techsage.dk

spinflow.dk

Email: sales@techsage.dk

For pricing and availability please contact
your local SPINJET dealer:

